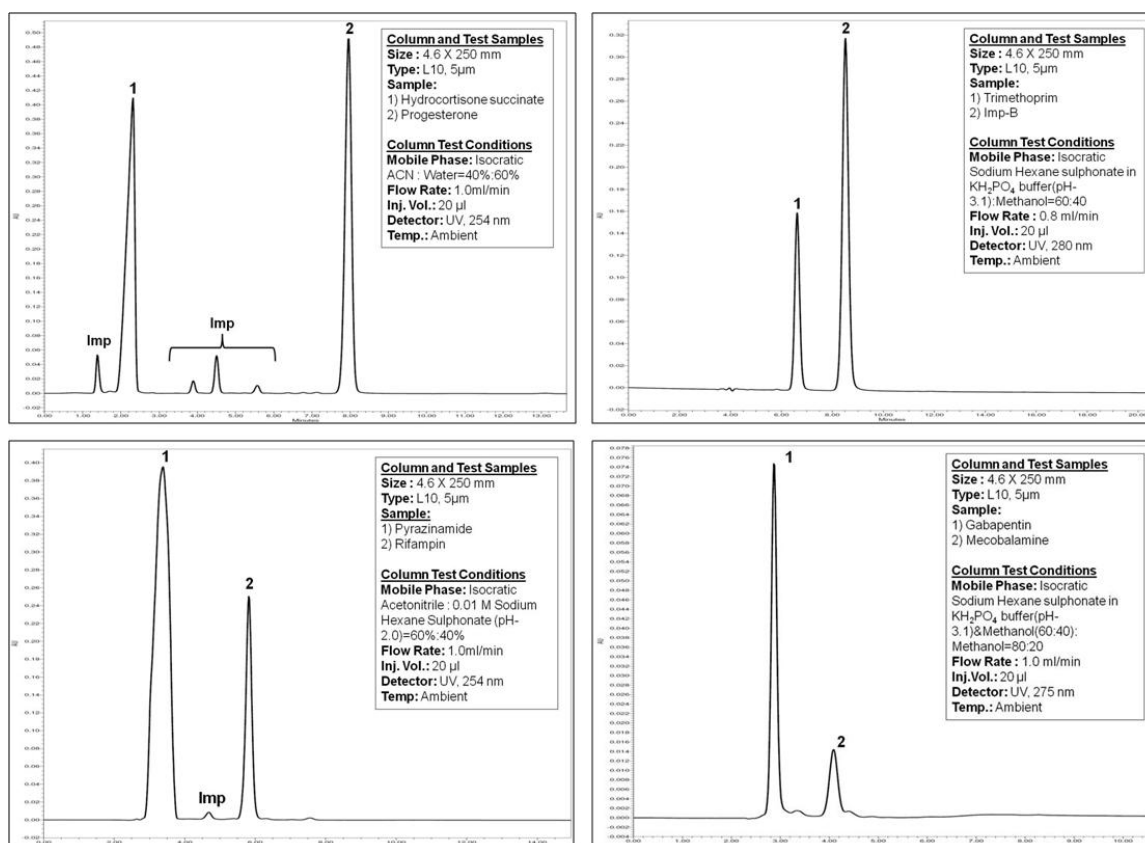


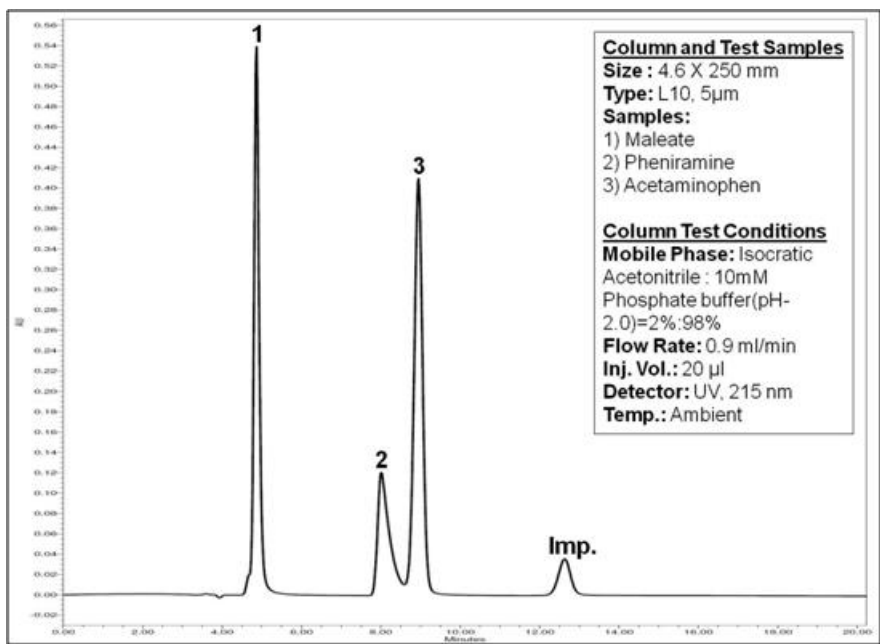
## CHROMASOL CN

Chromasol offers a good range of high-quality HPLC columns. Chromasol CN columns with Cyano (Nitrile) groups bound to the spherical, porous silica surface offer a unique polar selectivity and excellent peak shapes under reversed phase or normal phased conditions for basic and polar analytes. Separation mechanism is based on  $\pi$ - $\pi$  interactions mode, polar interactions, hydrophobic and hydrogen bonding interactions. The columns are used for the separation and extraction of very polar compounds that would normally adsorb irreversibly to more common polar phases such as silica. While the dipole interactions are operative, the alkyl chains in fact provide certain degree of phase stability in the mobile phase eluents and hydrophobicity to the phase.



The polar Cyano columns are useful for many separations of mixtures consisting of very different components that might have a very broad range of retention times on the usual columns. Common applications based on Cyano phases include the separation of flavonoids, extraction of polar compounds from non-polar samples and analysis of samples containing analytes with a wide range of hydrophobicity. Due to a combination of dipole-dipole interactions and sufficient hydrophobicity, Chromasol CN provides better separation and resolution and enhanced selectivity for steroidal mixtures. Chromasol CN columns are available with two different alkyl spacers and accordingly the Chromasol Brands are Chromasol CN-1 and Chromasol CN-2.

# Chromasol CN 1: Pharmaceuticals Applications

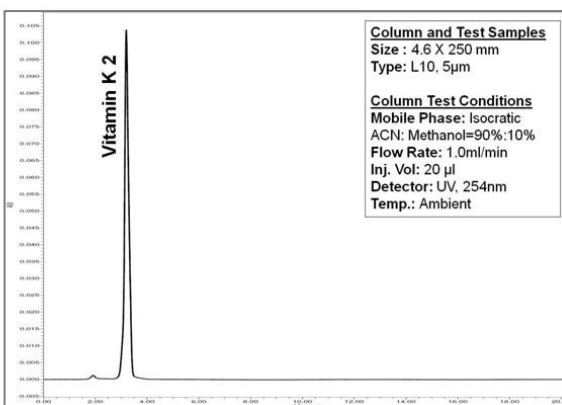
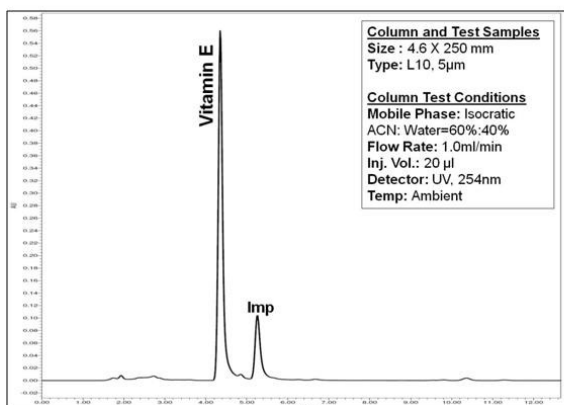
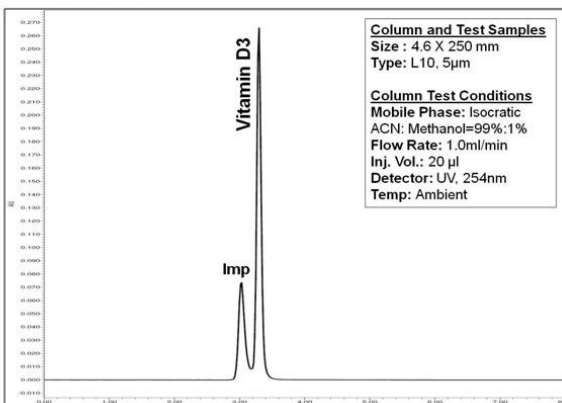
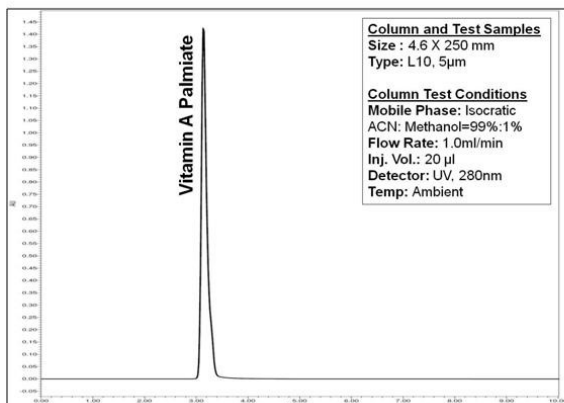


## Ordering Information

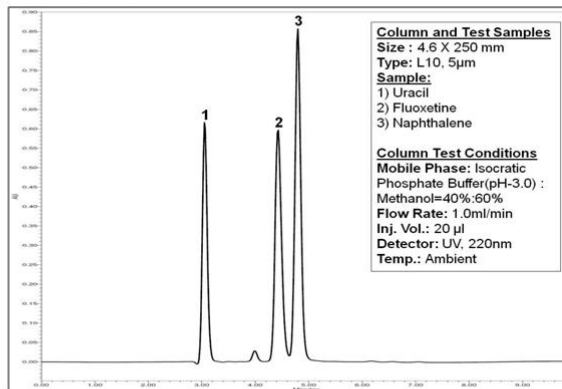
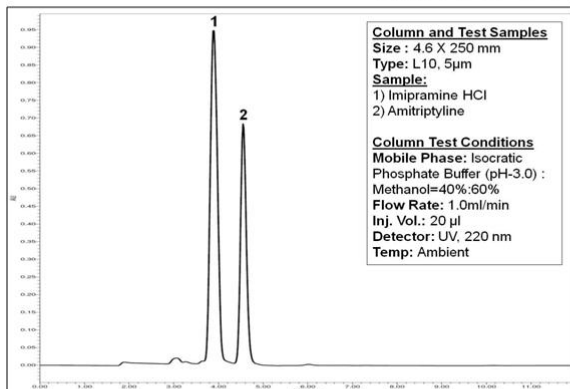
A performance validation report will be furnished with every column ordered.

Brand	Bonded Phases	Particle size, µ	Pore Size, Å	Column Size, mm	PN
Chromasol CN 1	Ethyl Cyano	5	100	3.9 x 300	ICN15100-3930
				3.9 x 150	ICN15100-3915
				4.0 x 300	ICN15100-4030
				4.0 x 250	ICN15100-4025
				4.0 x 150	ICN15100-4015
				4.0 x 125	ICN15100-4012.5
				4.0 x 100	ICN15100-4010
				4.6 x 250	ICN15100-4625
				4.6 x 200	ICN15100-4620
				4.6 x 150	ICN15100-4615
				4.6 x 125	ICN15100-4612.5
				4.6 x 100	ICN15100-4610
				10.0 x 250	ICN15100-10025
				21.2 x 250	ICN15100-21225
				21.2 x 150	ICN15100-21215
21.2 x 100	ICN15100-21210				

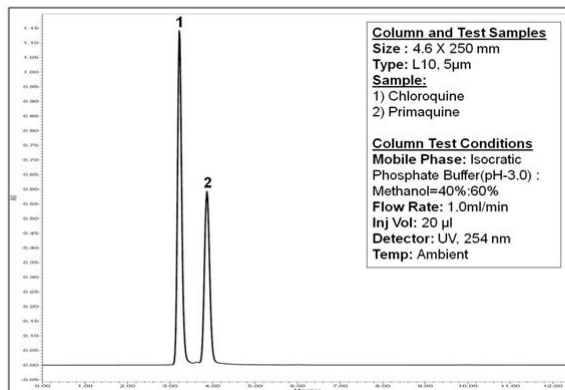
## VITAMINS - A,D,E,K



## ANTIDEPRESSANTS



## ANTI MALARIAL



## Ordering Information

A performance validation report will be furnished with every column ordered.

Brand	Bonded Phases	Particle size, $\mu$	Pore Size, $\text{\AA}$	Column Size, mm	PN
Chromasol CN 2	Propyl Cyano	5	100	3.9 x 300	ICN25100-3930
				3.9 x 150	ICN25100-3915
				4.0 x 300	ICN25100-4030
				4.0 x 250	ICN25100-4025
				4.0 x 150	ICN25100-4015
				4.0 x 125	ICN25100-4012.5
				4.0 x 100	ICN25100-4010
				4.6 x 250	ICN25100-4625
				4.6 x 200	ICN25100-4620
				4.6 x 150	ICN25100-4615
				4.6 x 125	ICN25100-4612.5
				4.6 x 100	ICN25100-4610
				10.0 x 250	ICN25100-10025
				21.2 x 250	ICN25100-21225
				21.2 x 150	ICN25100-21215
21.2 x 100	ICN25100-21210				