

INTEK CHROMASOL

Innovation Ahead

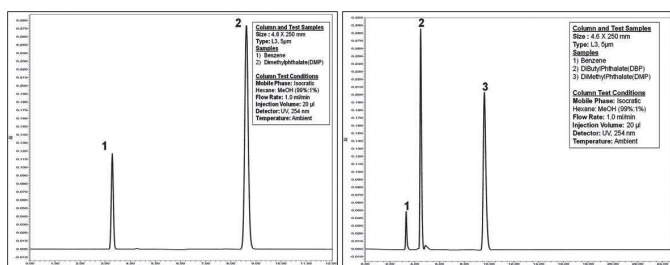


CHROMASOL SIL

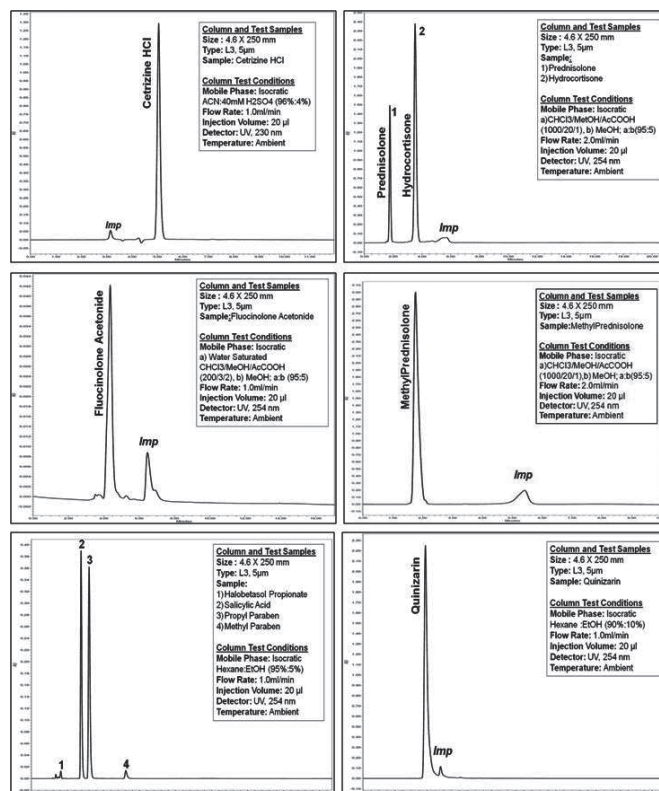
Chromasol SIL is a non-bonded normal phase silica column with super spherical porous silica gel packing material of high purity (>99.99%), mean particle size of 3 μ , 5 μ , 10 μ , pore sizes > 100Å, surface area of 320m²/g. This is used to separate compounds on the basis of their polarity, the least polar eluting first. Non-polar and moderately polar isomeric compounds could also be separated. The mobile phase generally used is Methanol: Hexane (10: 90), Ethyl Acetate: Hexane (10: 90) or Ethanol: Hexane (5: 95).

Chromasol SIL offers sharper and better peak shape, improved performance and is suitable for analytical and prep applications methods. Typical analytical scale chromatograms are illustrated in the Figure. It is quite explicit that the more hydrophobic dibutylphthalate elutes earlier compared to dimethylphthalate. In fact Chromasol SIL is cognized and is used in pharmaceutical Industries.

Typical Chromatograms



Pharmaceuticals Applications



Ordering Information

A performance validation report will be furnished with every column ordered.

Name	Bonded Phase	Particle Shape, Size μm	Pore Size, \AA	Column Size, mm	Part No.
Chromasol SIL	-	3	100	3.9 x 300	ICOSL3100-3930
				3.9 x 150	ICOSL3100-3915
				4.0 x 300	ICOSL3100-4030
				4.0 x 250	ICOSL3100-4025
				4.0 x 150	ICOSL3100-4015
				4.0 x 125	ICOSL3100-4125
				4.0 x 100	ICOSL3100-4010
				4.6 x 250	ICOSL3100-4625
				4.6 x 200	ICOSL3100-4620
				4.6 x 150	ICOSL3100-4615
				4.6 x 125	ICOSL3100-46125
				4.6 x 100	ICOSL3100-4610
10.0 x 250	ICOSL3100-10025				

Name	Bonded Phase	Particle Shape, Size μm	Pore Size, \AA	Column Size, mm	Part No.
Chromasol SIL	-	5	100	3.9 x 300	ICOSL5100-3930
				3.9 x 150	ICOSL5100-3915
				4.0 x 300	ICOSL5100-4030
				4.0 x 250	ICOSL5100-4025
				4.0 x 150	ICOSL5100-4015
				4.0 x 125	ICOSL5100-4125
				4.0 x 100	ICOSL5100-4010
				4.6 x 250	ICOSL5100-4625
				4.6 x 200	ICOSL5100-4620
				4.6 x 150	ICOSL5100-4615
				4.6 x 125	ICOSL5100-46125
				4.6 x 100	ICOSL5100-4610
				10.0 x 250	ICOSL5100-10025
				21.2 x 250	ICOSL5100-21225
21.2 x 150	ICOSL5100-21215				
21.2 x 100	ICOSL5100-21210				

Name	Bonded Phase	Particle Shape, Size μm	Pore Size, \AA	Column Size, mm	Part No.
Chromasol SIL	-	10	100	3.9 x 300	ICOSL5100-3930
				3.9 x 150	ICOSL10100-3915
				4.0 x 300	ICOSL10100-4030
				4.0 x 250	ICOSL10100-4025
				4.0 x 150	ICOSL10100-4015
				4.0 x 125	ICOSL10100-4125
				4.0 x 100	ICOSL10100-4010
				4.6 x 250	ICOSL10100-4625
				4.6 x 200	ICOSL10100-4620
				4.6 x 150	ICOSL10100-4615
				4.6 x 125	ICOSL10100-46125
				4.6 x 100	ICOSL10100-4610
				10.0 x 250	ICOSL10100-10025
				21.2 x 250	ICOSL10100-21225
				21.2 x 150	ICOSL10100-21215
				21.2 x 100	ICOSL10100-21210